

BLE USB LOW TEMPERATURE DATA LOGGER

TEMPU06 L100



Built-in USB Connector

Enables quick connection with PC anytime anywhere, no cable and reader required to download data.



Bluetooth Access

Access, control and download data logger outside of package or vehicle through Bluetooth® Low Energy (BLE) connection.



Auto PDF Report With Embedded Raw Data

Automatically generated encrypted PDF format report, no software required to access data file. PDF report includes recording summaries, statistics, alarm information, graph and optional tabular data. Embedded raw data allows further data processing via 3rd party system.



Flight Mode

Logger keeps recording with Bluetooth® wireless turned off under Flight Mode, and user could awake logger up from flight mode remotely using Temp Logger APP on smart device.



INTUITIVE LCD INDICATION

LCD presents all key information including recording statistics, alarm and running status, remaining battery volume.

APPLICATIONS



Cold-chain transportation



Agriculture



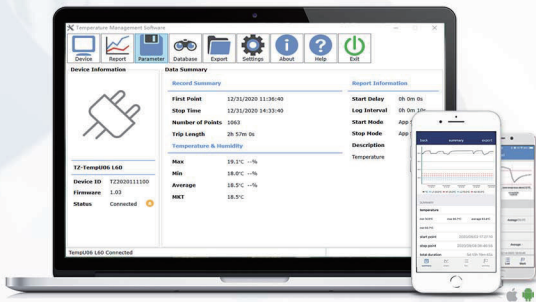
Pharmaceutical



Warehouse

BLE USB LOW TEMPERATURE DATA LOGGER

HOW TEMP06 L100 WORKS



Computer & Mobilephone



TempU06 L100

Bluetooth	Support
Sensor Type	External temp sensor
Battery Life	Typically 1 year
Dimension	115mm*50mm*20mm
Weight(s)	120g
Connectivity	USB 2.0 and Bluetooth 4.2
Detecting Temperature Range	-100°C~+80°C
Temperature Accuracy	±0.5°C
Temperature Resolution	0.1°C
Data Storage Capacity	32000
Start Mode	Push-To-Start or Timing Start
Logging Interval	Programmable (10s ~ 18h) [Default:10mins]
Alarm Range	Programmable [Default: <2°C or >8°C]
Alarm Delay	Programmable (0 ~ 960mins) [Default: 10mins]
Report Generation	Automatic PDF/CSV Report Generation
Software	Temp Logger APP Temp (RH) Management Software (For Windows,21 CFR 11 Compliant)
Protection Grade	IP65

Temp Logger APP, Software

- You can plug in USB for computer configuration software and export data
- Send exported files to partners through email and 3rd party App
- Search, connect, control and download Bluetooth data loggers
- Present data in powerful graph and detailed statistics views
- Save data into local data base on your Phone APP
- Available on both IOS / Android platforms
- Export data files as PDF / Excel formats

FEATURE

1. Bluetooth and USB connection. Dual interface ensures convenience and stability
2. Large LCD screen with powerful indicators
3. External temperature probe for low temperature condition, up to -100°C
4. Flight mode for air transportation
5. FDA 21 CFR Part 11, CE, EN12830, RoHS, NIST traceable calibration
6. No need any software to get the PDF and CSV file

Tzone Digital Technology Co., Ltd.

Tel: +86-755-82840647 Fax: +86-755-82840648

Email: sales@tzone-digital.com

Address: 16D, Haiying Building, South of Caitian Road, Futian District, Shenzhen, China 518033

Web: www.tzone-digital.com

